



Appach Road, Brixton, SW2

3 bedroom flat to let

£669 Per Week

Furnished

Property Details

Lovely three bedroom flat moments away from Brockwell Park.

Features

- Victorian conversion
- Bright and airy throughout
- Around a 15 minute walk to Herne Hill Station
- Close to Brockwell Park
- Around a 15 minute walk to Brixton Tube
- Separate kitchen

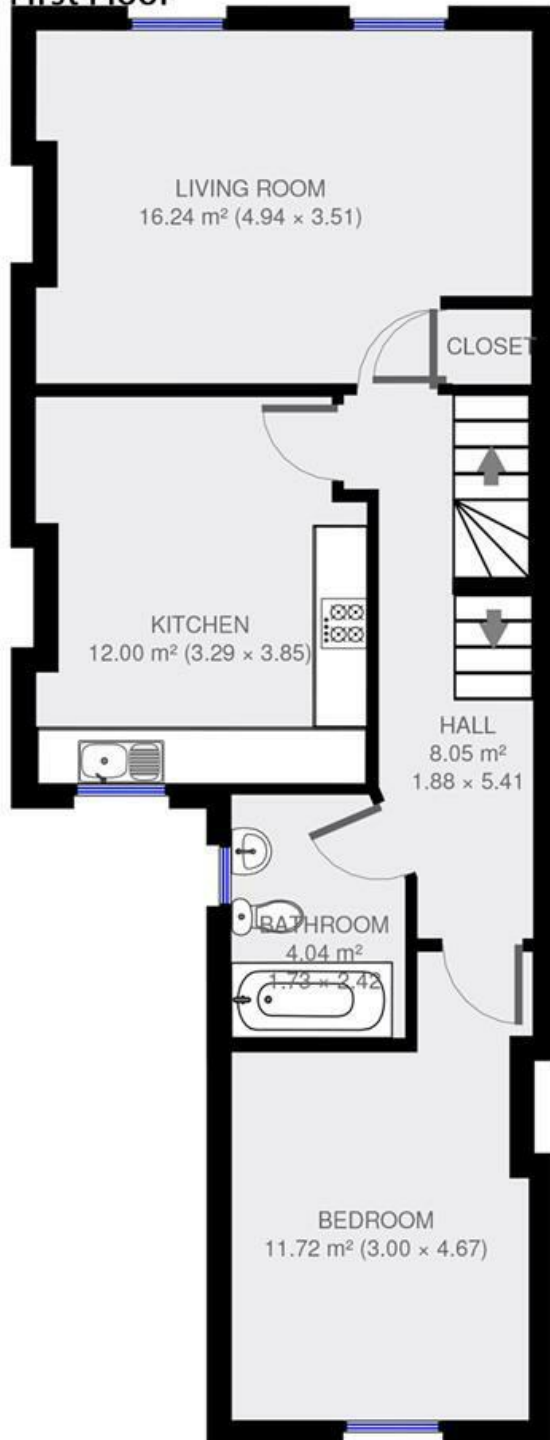
Council tax band C EPC rating D (64)



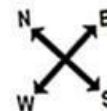
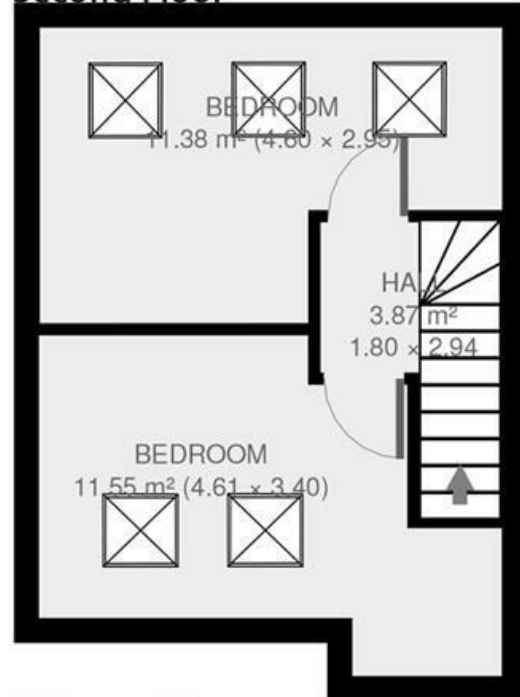
Appach Road, Brixton, SW2

Appach Road

First Floor



Second Floor



3 bed Flat.

Approx internal area:

883 sqft 82 sqm

While we do try our very best, floor plans are produced as a guide only and we take no responsibility for the precise accuracy with which any property is represented

Appach Road, Brixton, SW2

